

# Disassembly instruction

**ECO**.*pump*



**CONTENT**

	<b>Page</b>
1. Basic regulations .....	3
2. Disassembly of the pump .....	3
3. Cleaning .....	3
4. Assembly .....	4
5. Shaft seal disassembly .....	4
6. Assembly .....	5

The current publication of this disassembly instruction supersedes all information from previous publications. Beinlich reserves the right to make changes and substitutions. Beinlich is not liable for any printing errors. Reproduction, including excerpts, is permitted only after written approval by Beinlich. Beinlich reserves the right to modify technical data at any time. Last revised: 06/2023

## 1. BASIC REGULATIONS



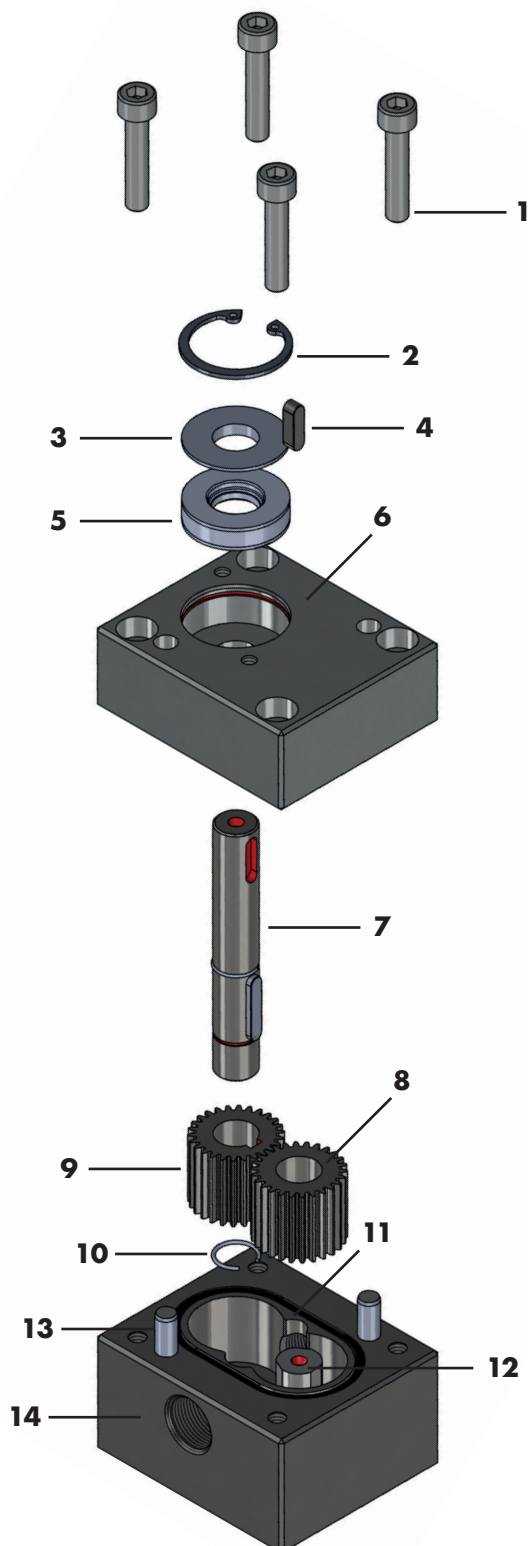
The unit must be secured to prevent reactivation before commencing disassembly work. The shut-off devices in the supply line must be closed. The pump must be at the ambient temperature.

## 2. DISASSEMBLY OF THE PUMP

- 2.1 Pull the key (4) off the shaft
- 2.2 Unscrew the 4 cylinder bolts M6 (1)
- 2.3 Carefully remove the front plate (6)
- 2.4 Pull the drive shaft with gear out (7, 9, 10)
- 2.5 Pull the driven gear out (8)
- 2.6 Remove the circlip (10)
- 2.7 Pull the gear off the shaft

### Note

The pin (12) is pressed into the combined plate (14) and cannot be removed.



## 3. CLEANING

- 3.1 Use only suitable cleaning agents. Do not use abrasive media.
- 3.2 Remove the O-ring (11) and replace it after cleaning.
- 3.3 The pump must be dried and then lubricated with liquid, that does not react with the medium to be conveyed.

## 4. ASSEMBLY

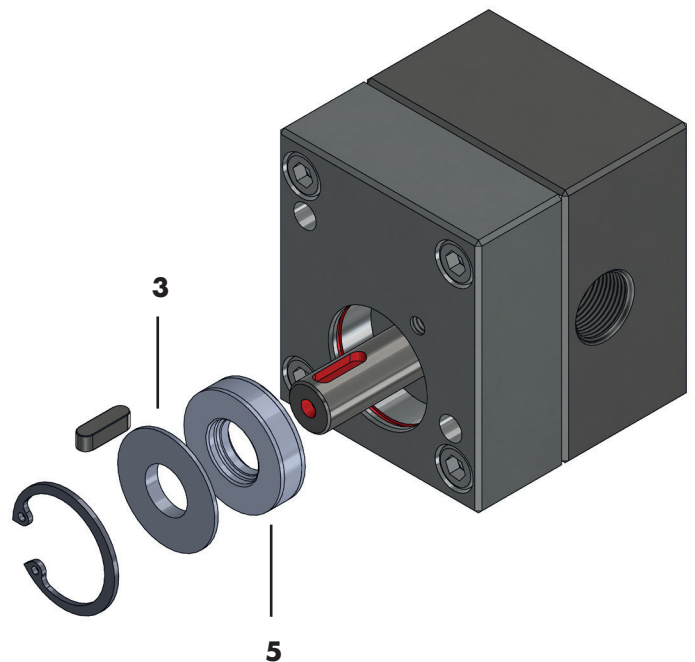
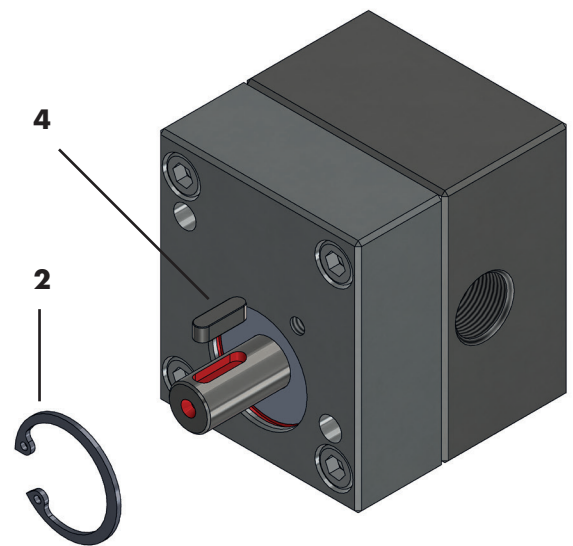
- 4.1 Align pins (13) in the combined plate (14).
- 4.2 Slide the gear (8) onto the pin (12).
- 4.3 Slide the gear (9) onto the drive shaft (7) and secure it with a circlip (10).
- 4.4 Make sure that the O-ring (11) is correctly fitted in the groove.
- 4.5 Carefully mount the front plate on the combined plate. The bearing position in the front plate centres the shaft for the radial shaft seal.
- 4.6 Insert the cylinder bolts (1)  
Tighten the bolts step-by-step in a cross-diagonal pattern to 15 Nm

## 5. SHAFT SEAL DISASSEMBLY

- 5.1 Remove the key (4)
- 5.2 Remove the locking ring (2)
- 5.3 Remove the front plate (see Disassembly 2.1 – 2.3)
- 5.4 Remove the support ring (3) (does not apply to PTFE version) and remove the radial shaft seal (5)

### Note

The front plate must be disassembled to remove the radial shaft seal. See Disassembly Instructions (2.1 – 2.3)



## 6. ASSEMBLY

- 6.1 Press the radial shaft seal and the support ring into the front plate to the shaft seal below the groove for the locking ring.
- 6.2 Fit the locking ring in the groove
- 6.3 Carefully mount the front plate on the combined plate. The bearing position in the front plate centres the shaft for the radial shaft seal.
- 6.3 The aligning pins centre the front plate on the combined plate.
- 6.4 Insert the cylinder bolts (1)  
Tighten the bolts step-by-step in a cross-diagonal pattern to 15 Nm

### **Note**

The drive shaft should be rotated manually while tightening the bolts.

**beinlich**. *pump  
systems*

Beinlich Pumpen GmbH  
Gewerbestraße 29  
58285 Gevelsberg/Germany  
Phone +49 (0) 23 32 / 55 86 0  
info@beinlich-pumps.com  
www.beinlich-pumps.com



A company of  
**e.holding**  
FLUID TECHNOLOGY GROUP