

# Disassembly instruction



	<b>Page</b>
1. Stator disassembly . . . . .	3
1.1 Storage /Changing . . . . .	3
2. Seal kit/Bearing kit . . . . .	4
3. Coupling /Drive unit . . . . .	5
4. Seal kit . . . . .	5
5. Spare parts . . . . .	6

## 1. STATOR DISASSEMBLY

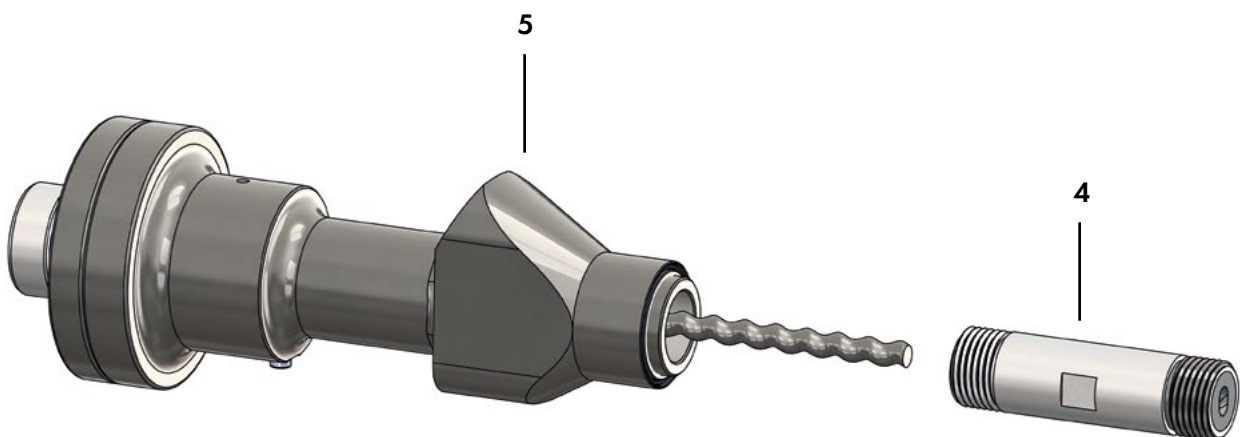
Unscrew pressure connection (1) and thread insert (2)\*<sup>1</sup>.  
Take off the shell (3) carefully.



\*<sup>1</sup> Only with displacement rates 0.30 cc/rev and 1.00 cc/rev

### 1.1 STORAGE / CHANGING

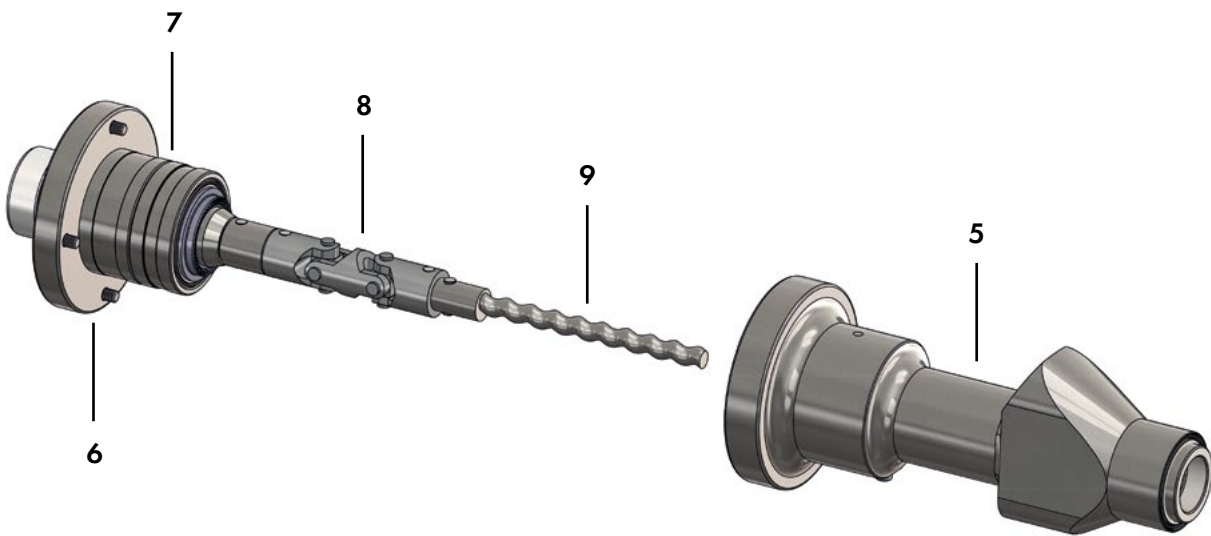
Unscrew stator (4) carefully (CCW) from the housing (5).



In case of longer downtimes (e.g. storage), the stator should be disassembled from the rotor.

## 2. SEAL KIT / BEARING KIT

Loosen the screws (6) and remove the seal and bearing kit (7) with the coupling / drive unit (8) and rotor (9) from the pump housing (5).



### 3. COUPLING / DRIVE UNIT

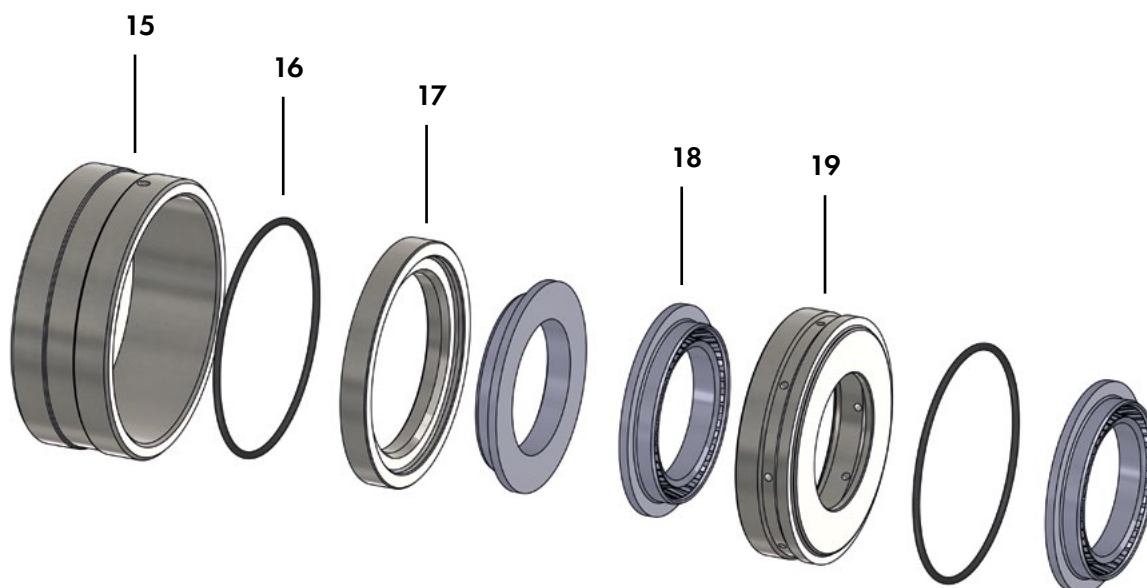
After removing the seal kit (10) carefully from the coupling / drive unit (8), the circlip (11) can be disassembled.

The bearing can be removed carefully from the coupling / drive unit (8).

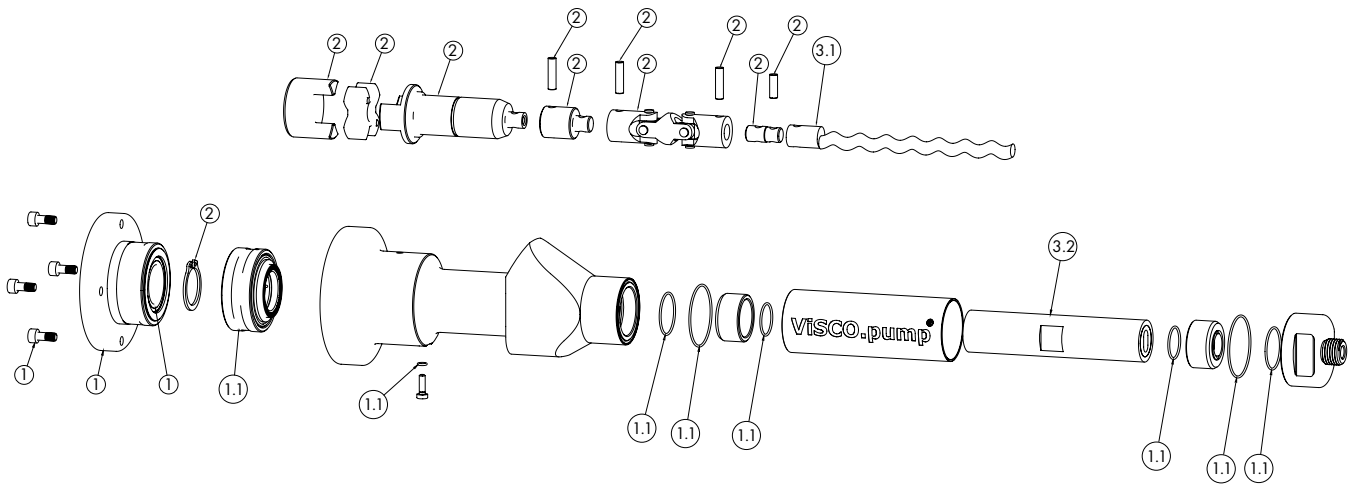


### 4. SEAL KIT

- Sealing seat (15)
- O-ring (16)
- Seal support (17)
- Radial shaft seal (18)
- Seal support (19)



## 5. SPARE PARTS



Pos	Spare part	Pump					
		0,30-FKM	0,30-FFKM	1,00-FKM	1,00-FFKM	2,00-FKM	4,00-FKM
1	Seal kit / Bearing kit	EDLP0520001				EDLP0510002	EDLP0510003
1.1	Seal kit	EDIP0520001				EDIP0510002	EDIP0510003
2	Coupling / Drive unit	EKUA0210001				EKUA0310001	EKUA0410001
3	Rotor/Stator assembly	ERSS0810001	ERSS0810002	ERSS0920001	ERSS0920002	ERSS1030001	ERSS0740001
3.1	Rotor	EROT4040001		EROT3060001		EROT3080001	EROT3100001
3.2	Stator	ESTA4040001	ESTA4040002	ESTA3060001	ESTA3060002	ESTA3080001	ESTA3100001

**beinlich**. *pump  
systems*

Beinlich Pumpen GmbH  
Gewerbestraße 29  
58285 Gevelsberg/Germany  
Phone +49 (0) 23 32 / 55 86 0  
info@beinlich-pumps.com  
www.beinlich-pumps.com



A company of  
**e.holding**  
FLUID TECHNOLOGY GROUP